

SWENRICK
CONSTRUCTIONS (VIC) PTY LTD
ABN 77 079 484 326

MBAV REG No. M1492

REGISTERED
Building Practitioner
REG No. DB-U28406

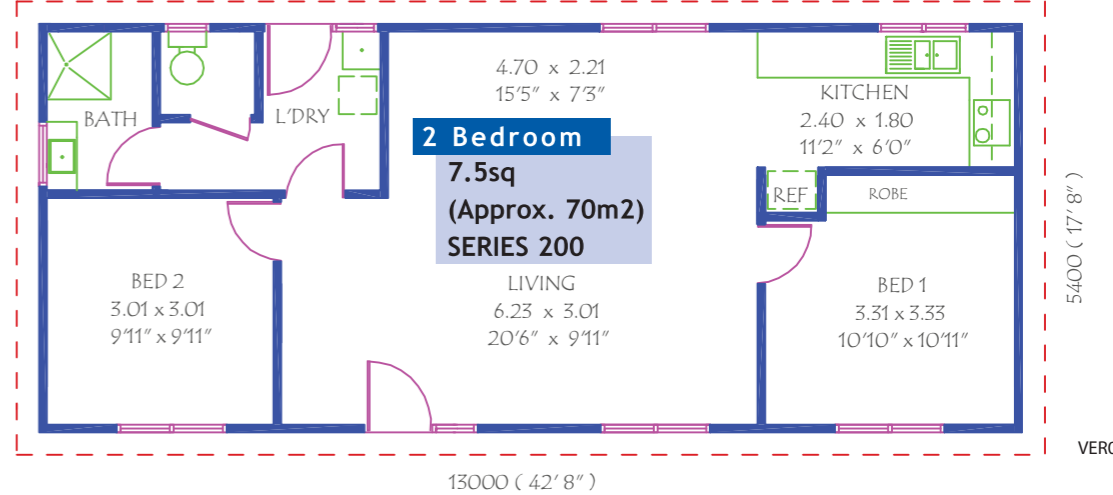
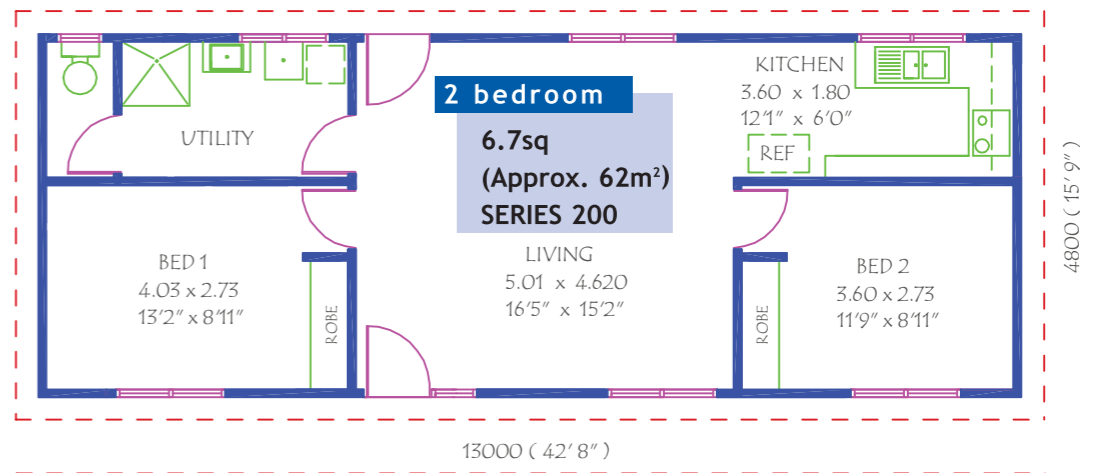
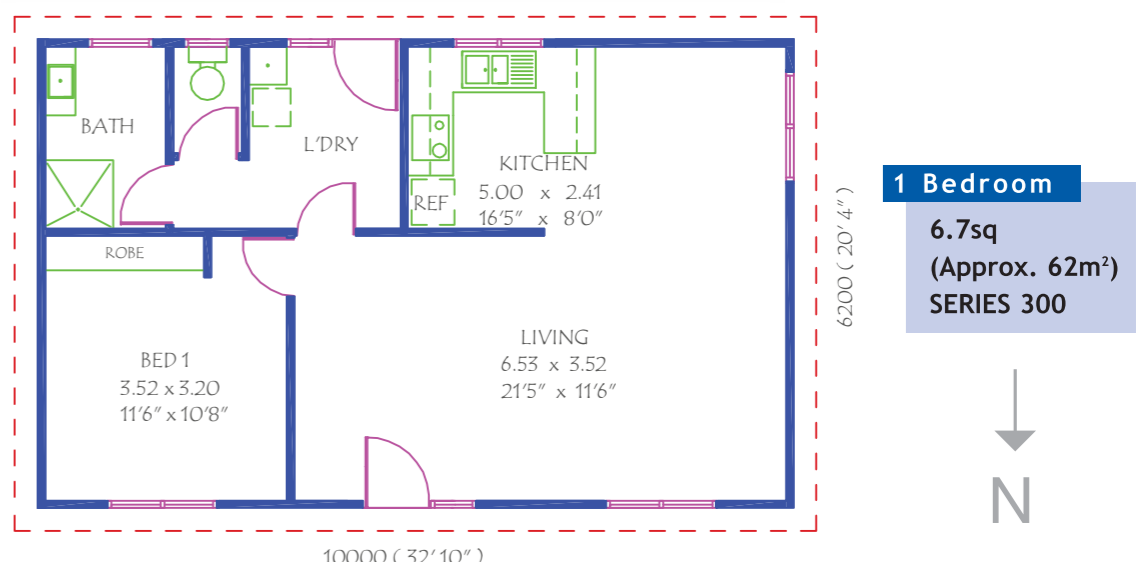
HIA
REG No. 849681

STANDARD RANGE

Haven

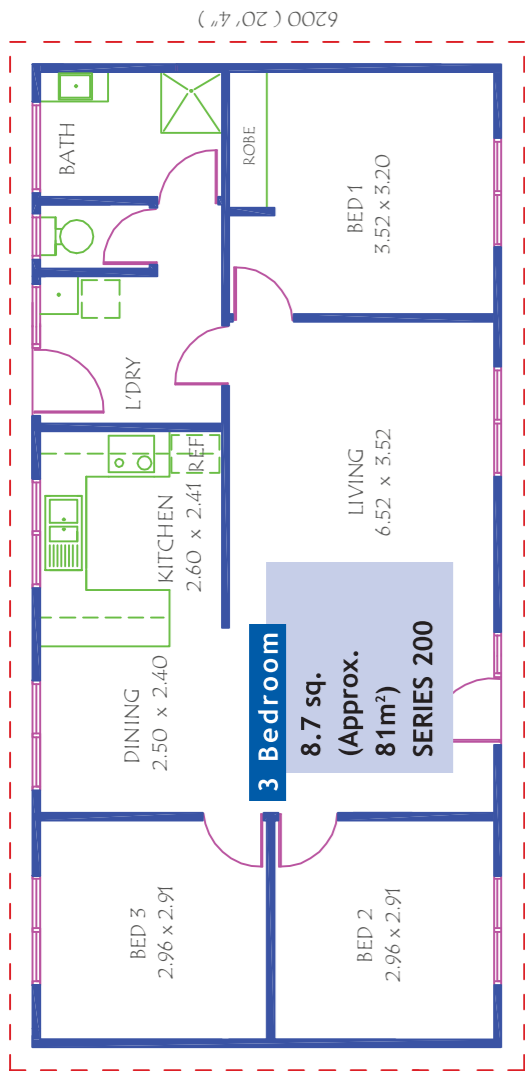
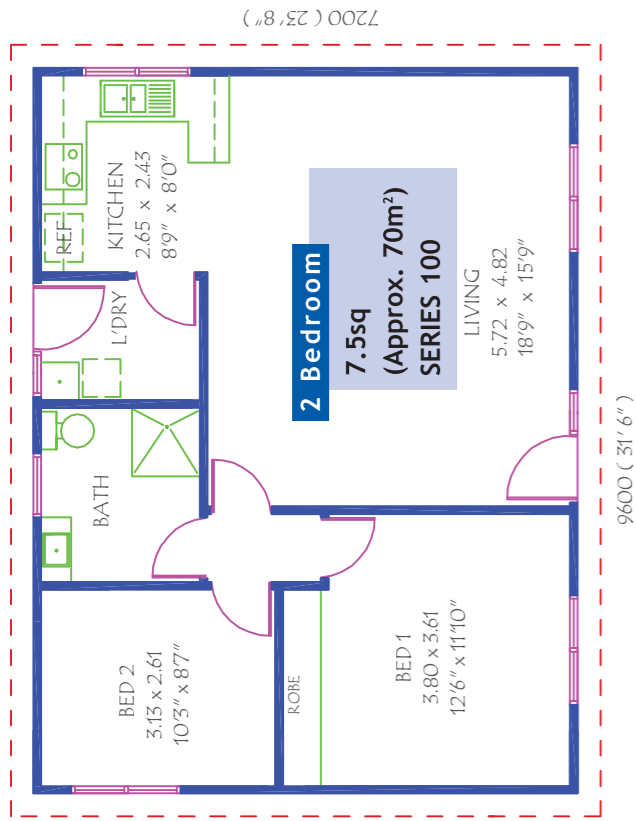


- A Rustic home which blends with any environment.
- Features:
- James Hardie™ Primeline® Newport Weather Board Exterior.
 - Aluminium Awning Windows in a Range of Colours
 - 17 Pitch Colourbond® Roof
 - Bath or Shower Base.



Email:
sales@swenrick.com.au
www.swenrick.com.au

VER010315

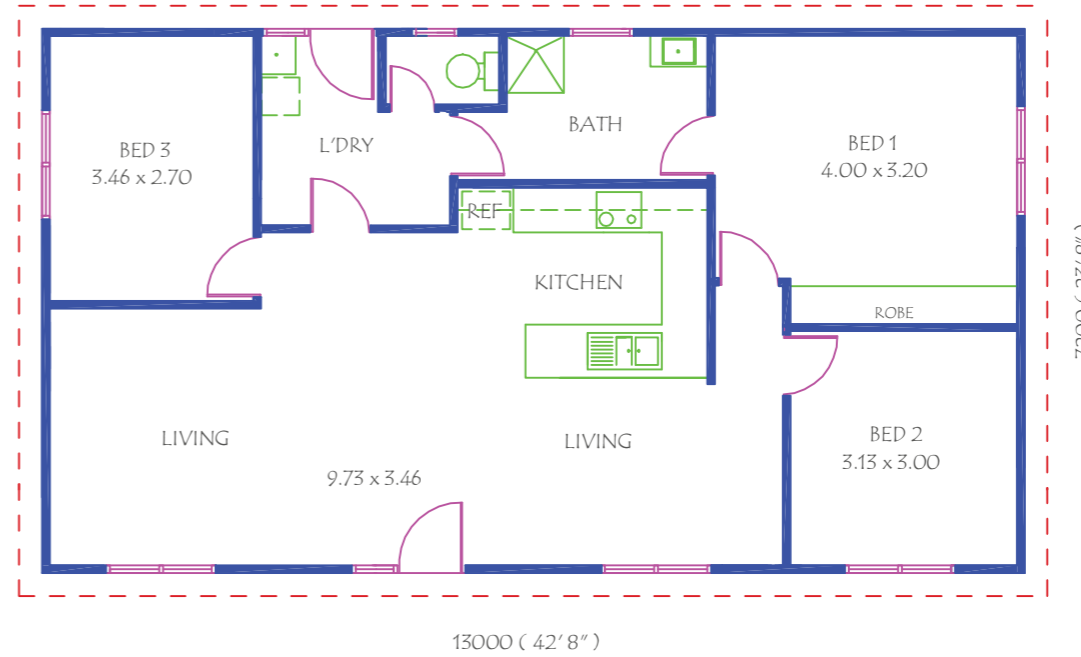
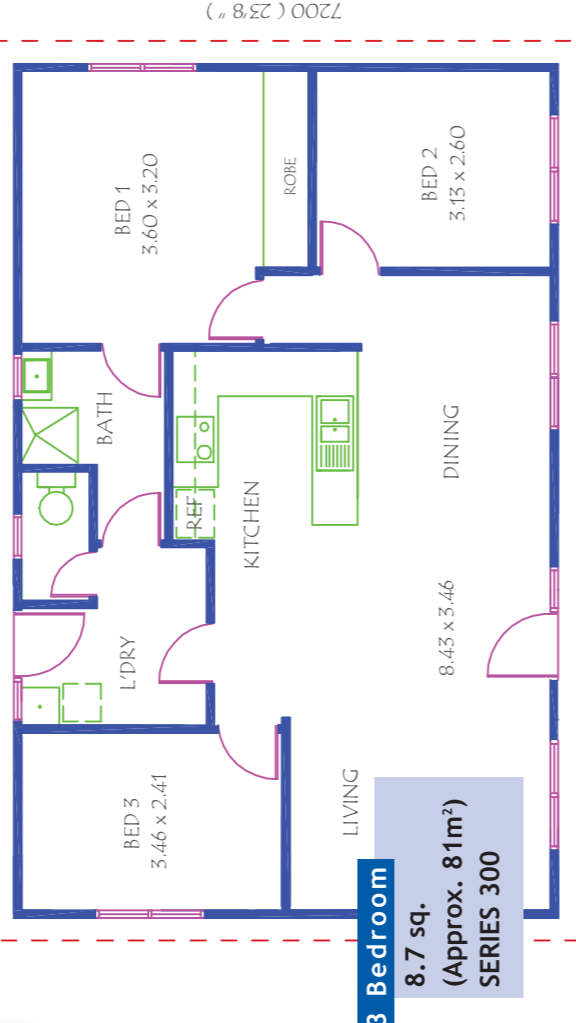
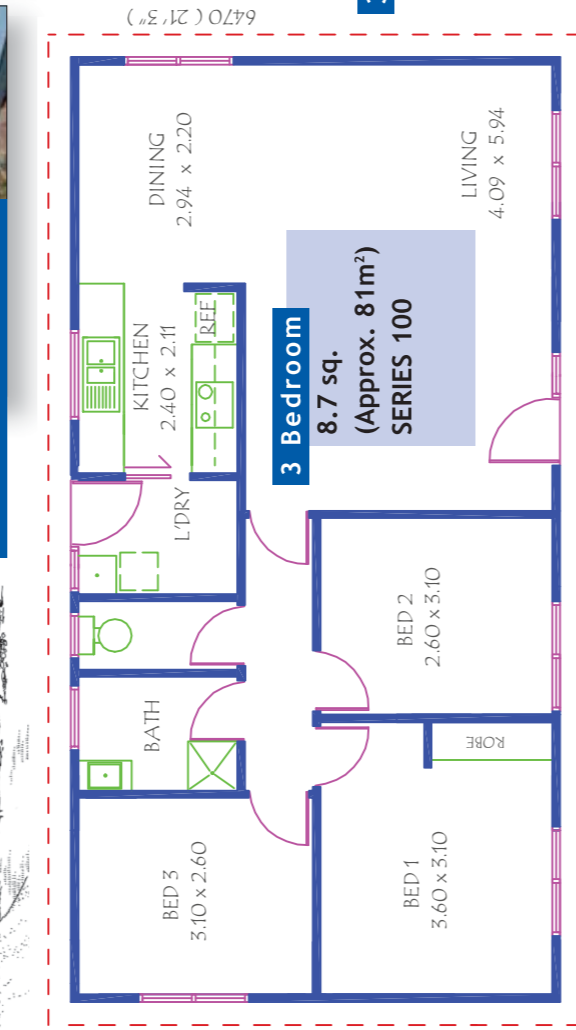


The 80.6m² (8.7 sqs.) with a 17° Colorbond® Roof. Although our smallest three bedroom plan you will be amazed at the living space of this home.

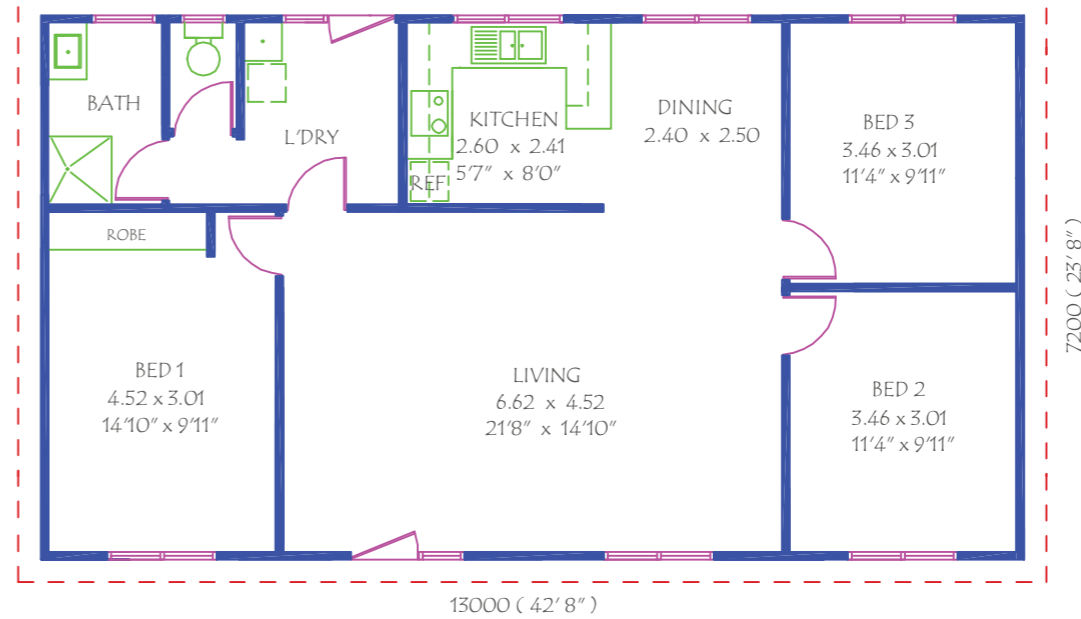
STANDARD HAVEN



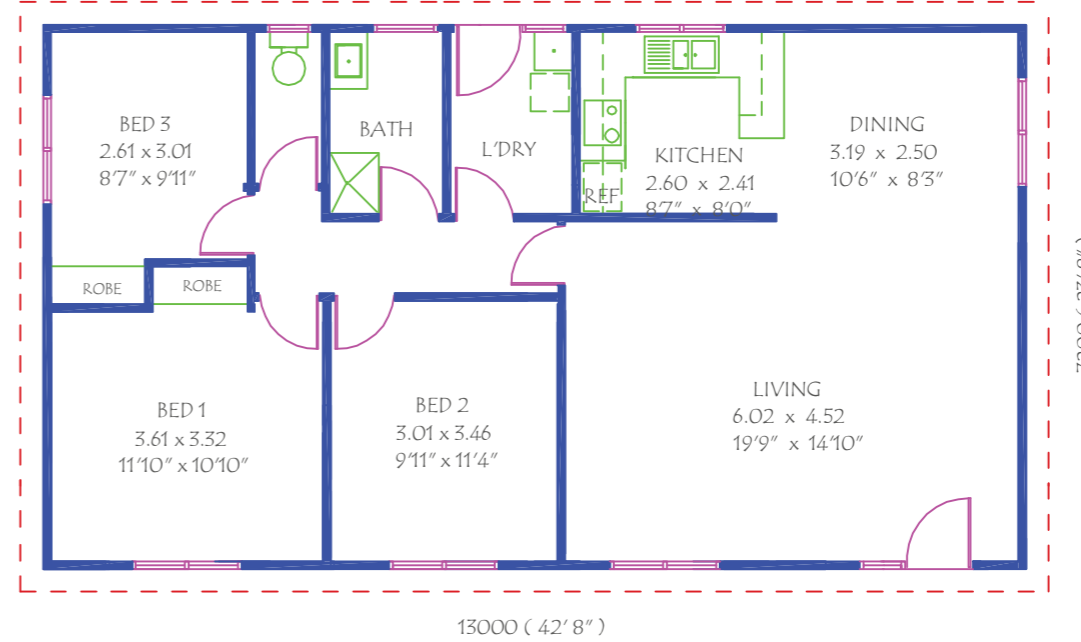
HAVEN WITH PORTICO



3 Bedroom
10.1 sq.
(Approx. 94m²)
SERIES 300



3 Bedroom
10.1 sq.
(Approx. 94m²)
SERIES 200



3 Bedroom
10.1 sq.
(Approx. 94m²)
SERIES 100

